

TM8112
Digital Audio Monitor with
Glow-on-the-Ceiling Night Light



vttech®
User's manual

CONGRATULATIONS

on purchasing your new VTech product.
Before using this product, please read **Important safety instructions**.

This manual has all the feature operations and troubleshooting necessary to install and operate your new VTech product. Please review this manual thoroughly to ensure proper installation and operation of this innovative and feature-rich VTech product.

Specifications are subject to change without notice.
© 2023 VTech Communications, Inc.
All rights reserved. 04/23. TM8112_QSG_V1



IMPORTANT SAFETY INSTRUCTIONS

The applied nameplate is located at the bottom of the baby unit's base.

When using your equipment, basic safety precautions should always be followed to reduce the risk of fire, electric shock and injury, including the following:

1. Follow all warnings and instructions marked on the product.
2. Adult setup is required.
3. **CAUTION:** Do not install the baby unit at a height above 2 meters.
4. This product is not a substitute for adult supervision of the infant. Supervising the infant is the parent's or caregiver's responsibility. This product could cease operating, and therefore you should not assume it will continue working properly for any given period of time. Further, this is not a medical device and should not be used as such. This product is intended to assist you in supervising your baby.
5. Do not use this product near water. For example, do not use it next to a bath tub, wash bowl, kitchen sink, laundry tub or swimming pool, or in a wet basement or shower.
6. **CAUTION:** Use only the battery provided. There may be a risk of explosion if a wrong type of battery is used for the parent unit. The battery cannot be subjected to high or low extreme temperature and low air pressure at high altitude during use, storage or transportation. Disposal of battery into fire or a hot oven, or mechanically crushing or cutting or the battery can result in an explosion. Leaving the battery in an extremely high temperature surrounding environment can result in an explosion or the leakage of flammable liquid or gas. Battery subjected to extremely low air pressure may result in an explosion or the leakage of flammable liquid or gas. Dispose of used battery according to the instructions.
7. Use only the adapters included with this product. Incorrect adapter polarity or voltage can seriously damage the product.



Power adapter information:

Output: 6V DC 400mA
VTech Telecommunications Ltd.
Model: VT05UUS06040



Rechargeable battery information:

2.4V 400mAh Ni-MH
Yiyang Corun Battery Co, Ltd
Model: NI-MHAAA400x2-FF

GPI International Ltd.
Model: VTRHC043C040

8. The power adapters are intended to be correctly oriented in a vertical or floor mount position. The prongs are not designed to hold the plug in place if it is plugged into a ceiling, under-the-table or cabinet outlet.
9. For pluggable equipment, the socket-outlet shall be installed near the equipment and shall be easily accessible.
10. Unplug this product from the wall outlet before cleaning. Do not use liquid or aerosol cleaners. Use a damp cloth for cleaning.
11. Unplug the power cords before replacing battery.
12. Do not cut off the power adapters to replace them with other plugs, as this causes a hazardous situation.
13. Do not allow anything to rest on the power cords. Do not install this product where the cords may be walked on or crimped.
14. This product should be operated only from the type of power source indicated on the marking label. If you are not sure of the type of power supply in your home, consult your dealer or local power company.
15. Do not overload wall outlets or use an extension cord.
16. Do not place this product on an unstable table, shelf, stand or other unstable surfaces.
17. This product should not be placed in any area where proper ventilation is not provided. Slots and openings in the back or bottom of this product are provided for ventilation. To protect them from overheating, these openings must not be blocked by placing the product

on a soft surface such as a bed, sofa or rug. This product should never be placed near or over a radiator or heat register.

18. Never push objects of any kind into this product through the slots because they may touch dangerous voltage points or create a short circuit. Never spill liquid of any kind on the product.
19. To reduce the risk of electric shock, do not disassemble this product, but take it to an authorized service facility. Opening or removing parts of the product other than specified access doors may expose you to dangerous voltages or other risks. Incorrect reassembling can cause electric shock when the product is subsequently used.
20. You should test the sound reception every time you turn on the units or move one of the components.
21. Periodically examine all components for damage.
22. There is a very low risk of privacy loss when using certain electronic devices, such as baby monitors, cordless telephones, etc. To protect your privacy, make sure the product has never been used before purchase, reset the baby monitor periodically by powering off and then powering on the units, and power off the baby monitor if you will not use it for some time.
23. Children should be supervised to ensure that they do not play with the product.
24. The product is not intended for use by persons (including children) with reduced physical, sensory or mental capabilities, or lack of experience and knowledge, unless they have been given supervision or instruction concerning use of the appliance by a person responsible for their safety.

SAVE THESE INSTRUCTIONS

Cautions

1. Use and store the product at a temperature between 32°F and 104°F.
2. Do not expose the product to extreme cold, heat or direct sunlight. Do not put the product close to a heating source.
3. Batteries should not be exposed to excessive heat such as bright sunshine or fire.



Warning—Strangulation Hazard—Children have STRANGLED in cords. Keep this cord out of the reach of children (more than 3 ft (0.9m) away). Do not remove this tag.



5. Never place the baby unit(s) inside the baby's crib or playpen. Never cover the baby unit(s) or parent unit with anything such as a towel or a blanket.
6. Other electronic products may cause interference with your baby monitor. Try installing your baby monitor as far away from these electronic devices as possible: wireless routers, radios, cellular telephones, intercoms, room monitors, televisions, personal computers, kitchen appliances and cordless telephones.

Precautions for users of implanted cardiac pacemakers
Cardiac pacemakers (applies only to digital cordless devices): Wireless Technology Research, LLC (WTR), an independent research entity, led a multidisciplinary evaluation of the interference between portable wireless devices and implanted cardiac pacemakers. Supported by the U.S. Food and Drug Administration, WTR recommends to physicians that:

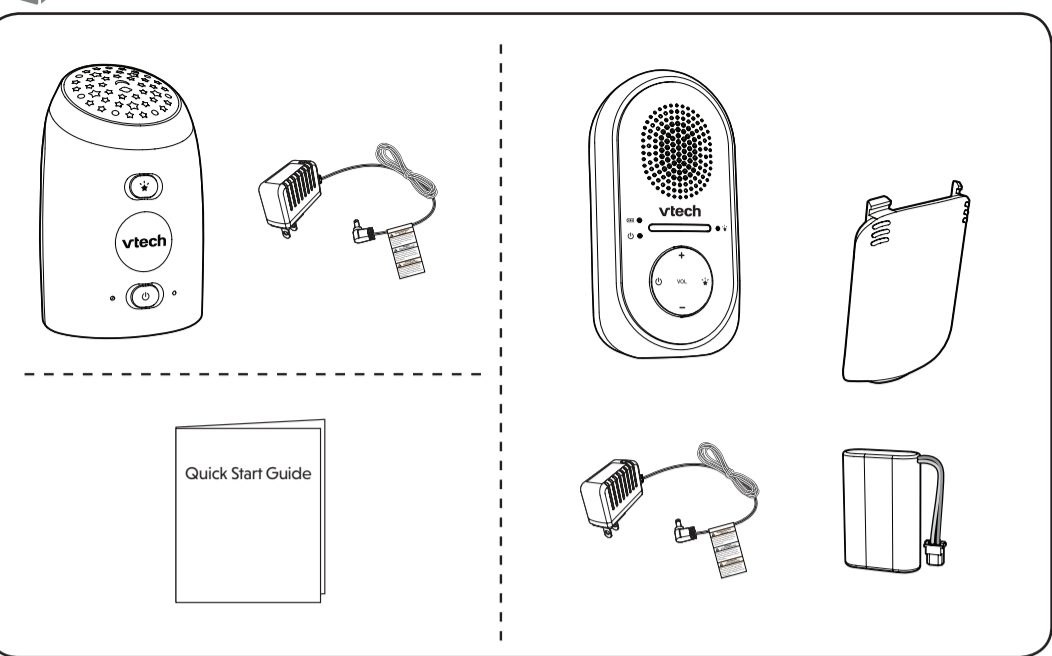
- **Pacemaker patients**
 - Should keep wireless devices at least six inches from the pacemaker.
 - Should NOT place wireless devices directly over the pacemaker, such as in a breast pocket, when it is turned ON.

WTR's evaluation did not identify any risk to bystanders with pacemakers from other persons using wireless devices.

Electromagnetic fields (EMF)

This VTech product complies with all standards regarding electromagnetic fields (EMF). If handled properly and according to the instructions in this user's manual, the product is safe to be used based on scientific evidence available today.

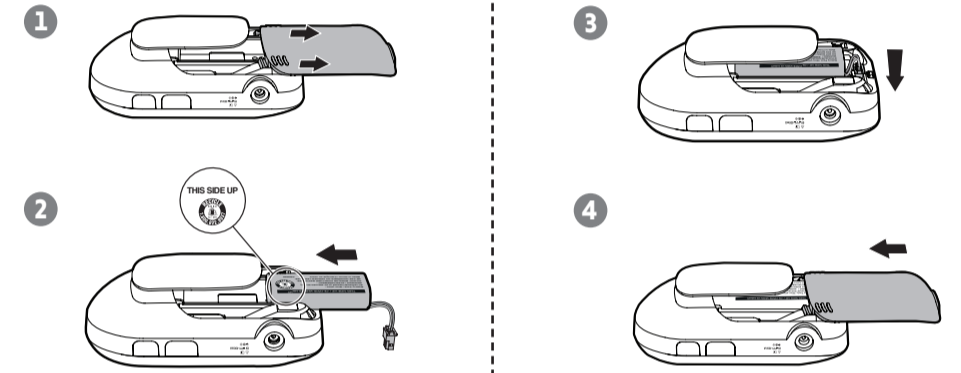
WHAT'S IN THE BOX



1 INSTALL PARENT UNIT BATTERY

NOTES

- Use only the battery supplied with this product.
- If the parent unit will not be used for a long time, disconnect and remove the battery to prevent possible leakage.

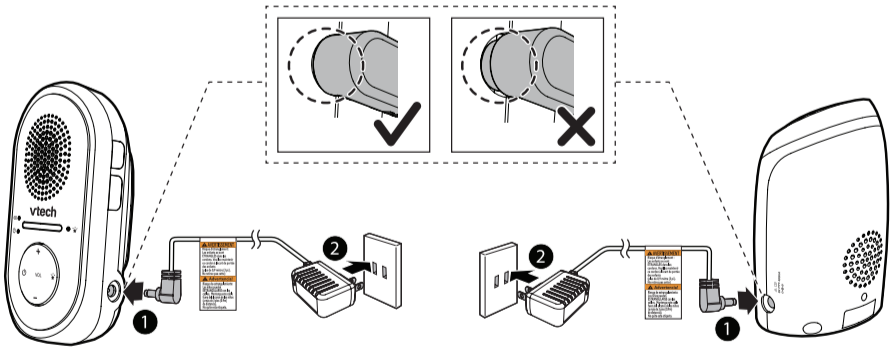


2 CONNECT AND CHARGE THE UNITS

Connect the baby monitor

NOTES

- Use only the power adapters supplied with this product.
- Make sure the baby monitor is not connected to a switch-controlled electric outlet.
- Connect the power adapters in a vertical or floor mount position only. The adapters' prongs are not designed to hold the weight of baby monitor, so do not connect them to any ceiling, under-the-table, or cabinet outlets. Otherwise, the adapters may not properly connect to the outlets.
- Make sure the parent unit, the baby unit and the power adapter cords are out of reach of children.



Charge the parent unit

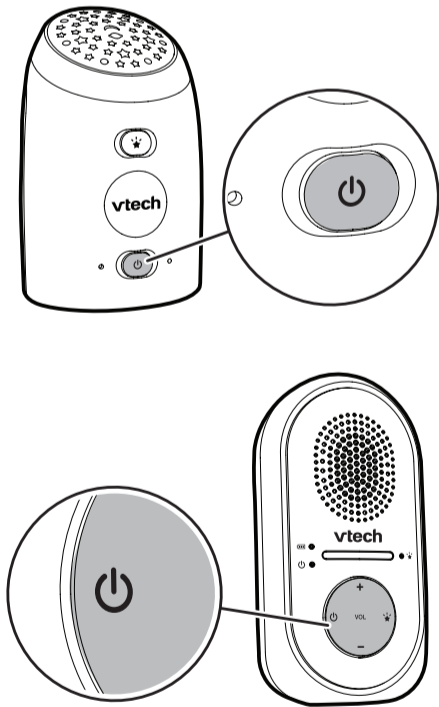
When you have installed the parent unit battery and connected it to power for the first time or after a power outage, the parent unit powers on automatically.

NOTES

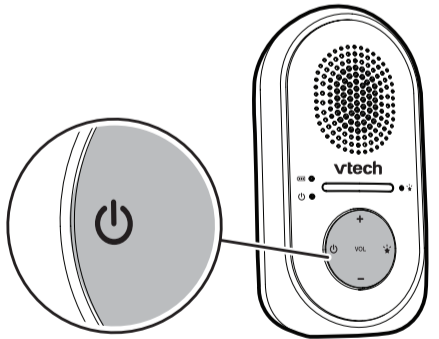
- The parent unit battery is fully charged after 16 hours of continuous charging.
- It takes longer to charge the battery when the parent unit is turned on. To shorten the charging time, turn the parent unit off while charging.
- The standby time varies depending on the volume level you set, your actual use and the age of battery.

3 POWER ON THE BABY MONITOR

1. Press **POWER** to power on the baby unit. The power indicator LED light turns on. Press and hold **POWER** again to power off the baby unit. The power indicator LED light turns off.



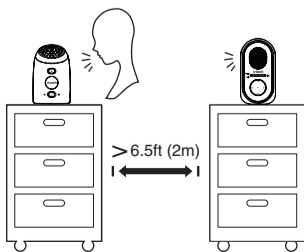
2. Press and hold **POWER** to power on the parent unit. The power indicator LED light turns on. Press and hold **POWER** again to power off the parent unit. The power indicator LED light turns off.



4 STATUS CHECK

You may test the baby monitor before initial use, and at regular times thereafter.

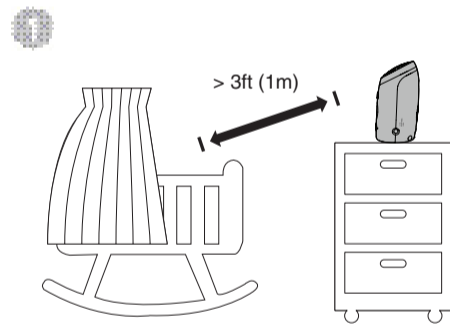
1. Make sure your baby unit and parent unit are on.
2. Speak towards the microphone of the baby unit. You will hear the sound at the parent unit, and see the visual sound indicators light up.



CAUTION

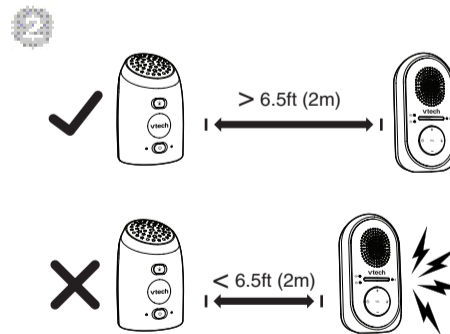
- For hearing protection, make sure the parent unit is more than 6.5 ft (2 m) away from the baby unit. If you hear feedback, move the units further apart until the noise stops. You can also press **VOL** on the parent unit to lower or mute the noise.

5 POSITIONING THE BABY MONITOR



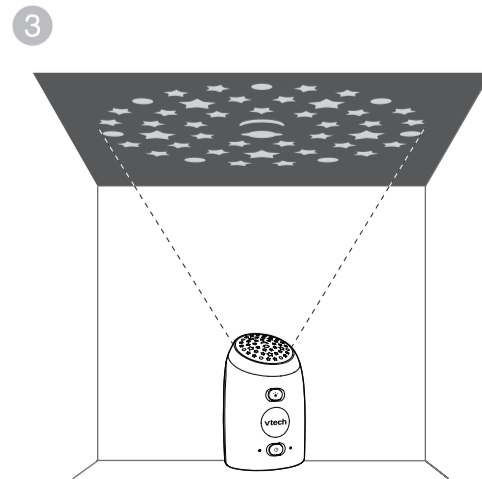
CAUTION

- Keep the baby unit out of the reach of your baby. Never place or mount the baby unit inside the baby's cot or playpen.



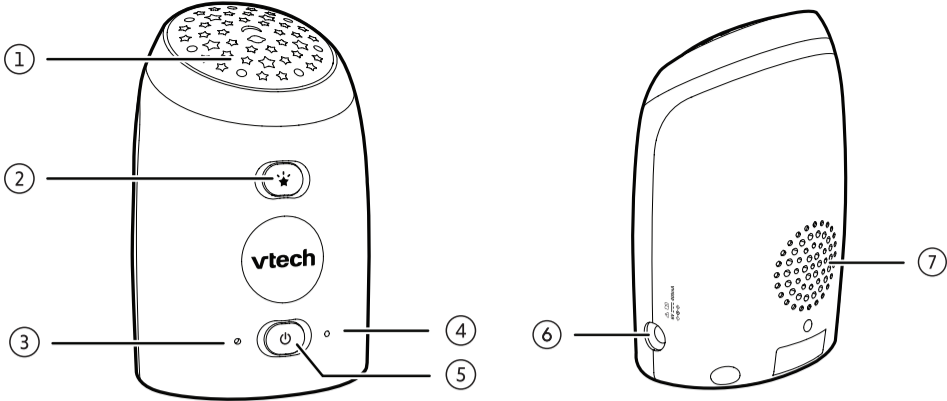
CAUTION

- For hearing protection, make sure the parent unit is more than 6.5 ft (2 m) away from the baby unit. If you experience feedback:
 - Move the parent unit further until the noise stops.
 - You can also press **VOL** on the parent unit to lower or mute the noise.





OVERVIEW - BABY UNIT



- 1

Glow-on-the-ceiling night light projector
- 2

★ Glow-on-the-Ceiling Night Light On/Off
 - Press to turn Glow-on-the-Ceiling Night Light on or off.
- 3

Microphone
- 4

Power LED light
 - Light on when the baby unit is on.
 - Light off when the baby unit is off.
- 5

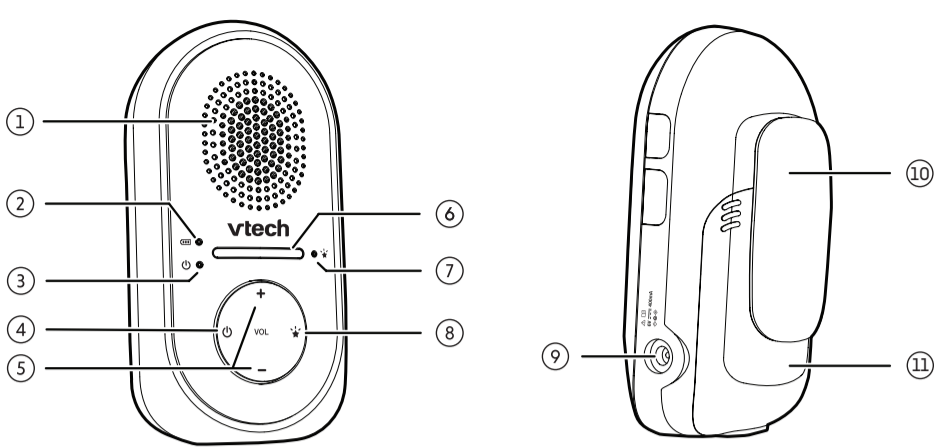
⏻ Power On/Off
 - Press and hold to power on.
 - Press and hold again to power off.
- 6

Power jack
- 7

Speaker



OVERVIEW - PARENT UNIT



- 1

Speaker
- 2

🔋 Battery LED light
 - Light on when battery is charging.
 - Light flashes when battery is low and needs charging.
 - Light off when the parent unit is running on AC power without battery installed, or the parent unit is running on battery only.
- 3

⏻ Power LED light
 - Light on when parent unit is powered on.
 - Light off when the parent unit is powered off.
 - Light flashes when there is no link between baby unit and parent unit.
- 4

⏻ Power On/Off
 - Press and hold to power on.
 - Press and hold again to power off.
- 5

VOL- / VOL+
 - Adjust parent unit speaker volume.
- 6

Visual Sound Indicator

The visual sound indicator shows the sound level detected by the baby unit, and the volume level when setting unit volume.

 - Green lights indicate a moderate sound level detected by the baby unit.
 - Additional red lights indicate a higher sound level detected by the baby unit (e.g. baby crying loudly).
- 7

★ Night Light LED light
 - Light on when the projector is on.
 - Light off when the projector is off.
- 8

★ Glow-on-the-Ceiling Night Light On/Off
 - Press to turn Glow-on-the-Ceiling Night Light on or off.
- 9

Power jack
- 10

Belt clip
- 11

Battery compartment cover



BASIC OPERATION

Adjust speaker volume

The parent unit speaker volume is preset to Level 3 by default, you can adjust it to your preferred volume level.

- Press **VOL-** to decrease the volume, and **VOL+** to increase the volume.

To mute the speaker volume:

- Press **VOL-** repeatedly until the volume reaches the minimum.

NOTE

- If you continue to press **VOL-** or **VOL+** when the volume reaches the minimum or maximum setting, the parent unit will beep twice.

Turn on and off glow-on-the-ceiling night light

Directly on the baby unit:

- Press **★** to turn the night light on, and press again to turn it off.

Remotely on the parent unit:

- Press **★** to turn the night light on, the **★ Night Light LED light** will light up.
- Press **★** again to turn the night light off, the **★ Night Light LED light** will switch off.

Parent unit alert tones

- Low battery tone**
- Beeps twice every 10 minutes when the battery is low.
- Out of range tone**
- Beeps three times every 30 seconds when there is no link between the baby unit and parent unit, or when the parent unit is out of range from the baby unit.



GENERAL PRODUCT CARE

- To keep this product working well and looking good, follow these guidelines:
- Avoid putting it near heating appliances and devices that generate electrical noise (for example, motors or fluorescent lamps).
 - DO NOT expose it to direct sunlight or moisture.
 - Avoid dropping the product or treating it roughly.
 - Clean with a soft cloth.
 - DO NOT immerse the parent unit and the baby unit in water and do not clean them under the tap.
 - DO NOT use cleaning spray or liquid cleaners.
 - Make sure the baby unit and parent unit are dry before you connect them to the mains again.

FCC AND IC REGULATIONS

FCC Part 15

This equipment has been tested and found to comply with the requirements for a Class B digital device under Part 15 of the Federal Communications Commission (FCC) rules. These requirements are intended to provide reasonable protection against harmful interference in a residential installation. This equipment generates, uses and can radiate radio frequency energy and, if not installed and used in accordance with the instructions, may cause harmful interference to radio communications. However, there is no guarantee that interference will not occur in a particular installation. If this equipment does cause harmful interference to radio or television reception, which can be determined by turning the equipment off and on, the user is encouraged to try to correct the interference by one or more of the following measures:

- Reorient or relocate the receiving antenna.
- Increase the separation between the equipment and receiver.
- Connect the equipment into an outlet on a circuit different from that to which the receiver is connected.
- Consult the dealer or an experienced radio/TV technician for help.

WARNING: Changes or modifications to this equipment not expressly approved by the party responsible for compliance could void the user's authority to operate the equipment. This device complies with Part 15 of the FCC rules. Operation is subject to the following two conditions: (1) this device may not cause harmful interference, and (2) this device must accept any interference received, including interference that may cause undesired operation.

To ensure safety of users, the FCC has established criteria for the

amount of radio frequency energy that can be safely absorbed by a user or bystander according to the intended usage of the product. This product has been tested and found to comply with the FCC criteria. Caution: The baby unit must be installed to provide a separation distance of at least 20cm from all persons.

This Class B digital apparatus complies with Canadian requirement:

CAN ICES-3 (B)/NMB-3(B)

Industry Canada

This device contains licence-exempt transmitter(s)/receiver(s) that comply with Innovation, Science and Economic Development Canada's licence-exempt RSS(s). Operation is subject to the following two conditions:

- (1) This device may not cause interference.
- (2) This device must accept any interference, including interference that may cause undesired operation of the device.

The term "IC:" before the certification/registration number only signifies that the Industry Canada technical specifications were met.

This product meets the applicable Innovation, Science and Economic Development Canada technical specifications.

FCC RF radiation exposure statement

Caution: This baby unit must be installed to provide a separation distance of at least 20cm from all persons. For body worn operation, this parent unit has been tested and meets the FCC RF exposure guidelines. Use of other accessories may not ensure compliance with FCC RF exposure guidelines. This equipment complies also with Industry Canada RSS-102 with respect to Canada's Health Code 6 for Exposure of Humans to RF Fields.

TECHNICAL SPECIFICATIONS

Frequency control	Crystal controlled PLL synthesizer
Transmit frequency	Baby unit: 1911.168 - 1918.080 MHz Parent unit: 1911.168 - 1918.080 MHz
Channels	5
Nominal effective range	Maximum power allowed by FCC and IC. Actual operating range may vary according to environmental conditions at the time of use.
Power requirements	Baby unit adapter: Input: 100-120V AC 60Hz; Output: 6V DC @ 400mA Parent unit adapter: Input: 100-120V AC 60Hz; Output: 6V DC @ 400mA Parent unit battery: 2.4V 400mAh Ni-MH battery